

FITTING INSTRUCTIONS

WARNING:

Before you begin installation, read all instructions thoroughly.
Proper tools will improve the quality of installation and reduce the time required.

- This product should be installed as demonstrated in the *Product «Fitting Instructions»*;
- The specified parts, will only fit the models specified by **AFN**;
- Do not modify any component of the product;
- It is recommended that this product is installed by specialized and trained personnel;
- AFN doesn't take responsibility for changes made in the vehicle by its manufacturer;
- Work safely and use specialized tools at all times;
- **Always use protective gear.**

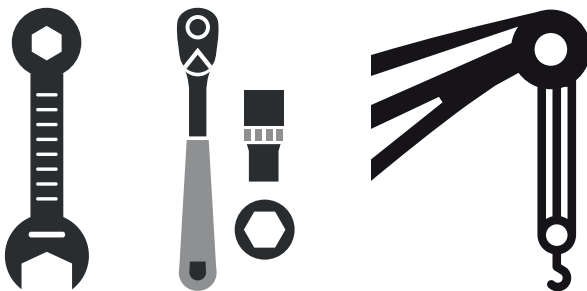


Size	Torque Nm	Torque lbft
M6	9 Nm	7 lbft
M8	22 Nm	16 lbft
M10	44 Nm	32 lbft
M12	77 Nm	57 lbft

Mouting Time

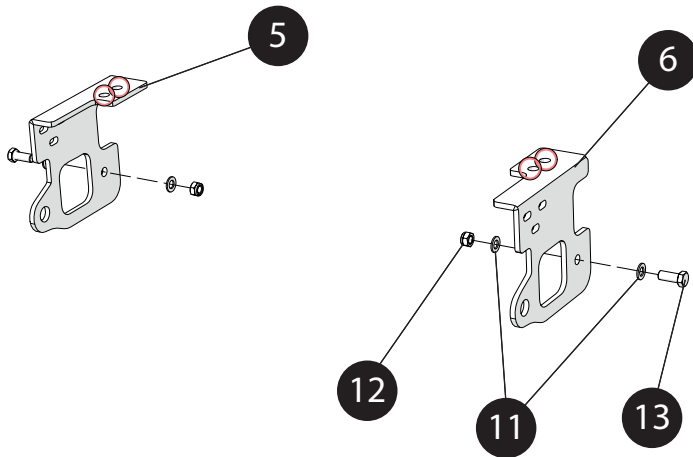
- 1 hour
- 2 persons (recommended)

Tools Required



- Wrench
- Ratchet wrench
- Crane

STEP1 - FITTING RECOVERY POINTS



NUMBER	REF	QUANTITY
5	46010294	1x
6	46010293	1x
11	45000161	4x
12	45000162	2x
13	45000433	2x

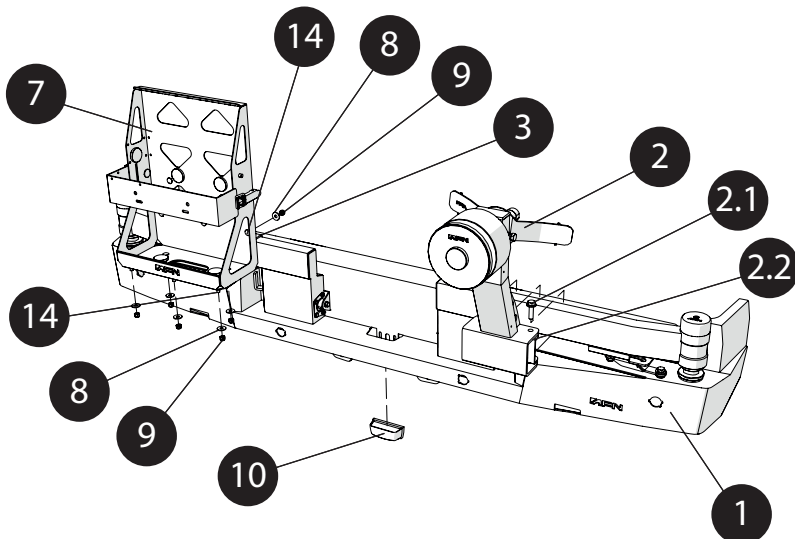
Start by fitting both Recovery Points(5)(6) in the vehicle.

Use 1x Bolt M16x40(13) with 2x Washers M16(11) and 1x Nylock Nut M16(12), each.

Also, use 2x OEM Bolts where the red circles are.

Do not tighten yet.

STEP2 - PREPARATION OF AFN REAR BUMPER



NUMBER	REF	QUANTITY
1	47002529	1x
2	48001309	1x
2.1	45001238	6x
2.2	45001248	6x
3	47001696	1x
7	46003334	1x
8	45000011	10x
9	45000018	10x
10	45000155	1x
14	45000717	10x

Before fitting the AFN Rear Bumper(1) in the vehicle, there are a few things that need to be done. Fit WheelCarrier(2) using 6x Flange Bolts M10x35(2.1) with 6x Flange Nuts M10(2.2).

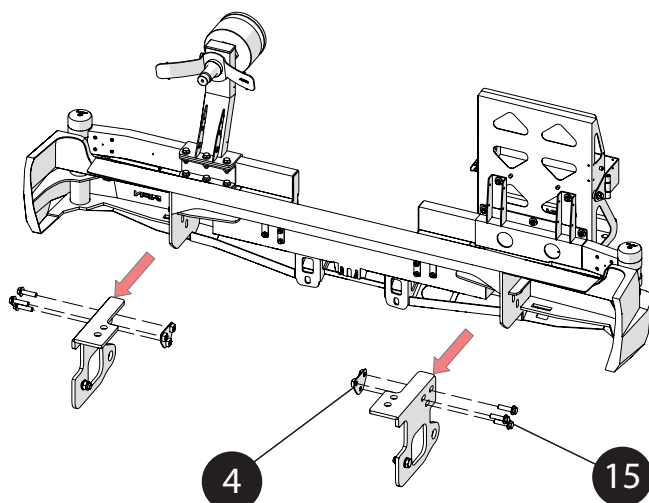
Then, fit the Jerrycan-Holder(7) in the Base Reinforcement(3) and the Arm with 10x Bolts M8x20(14), 10x Washers M8(8) and 10x Nylock Nuts M8(9).

Finally, fit the License plate Light(10).

Once everything is in place,

Give the Final torque.

STEP3 - FITTING REINFORCEMENTS IN AFN REAR BUMPER



NUMBER	REF	QUANTITY
4	46010339	2x
15	45001401	6x

Then, take on AFN Rear Bumper(1) and fit it on both Recovery Points(5)(6).

Use 3x Flange Bolts M12x45(15) and 1x Triple Nut Plate M12(4), on each.

Once everything is in place,

Give the Final torque.